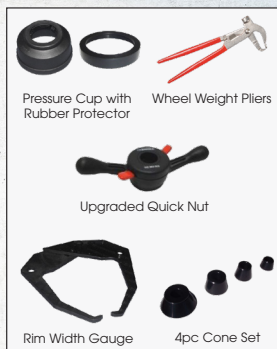


# NO B.S. – JUST BALANCE SIMPLE. RELIABLE. DONE RIGHT.

The RSB1100 is the entry level balancer that delivers exactly what you need. No flashy features, no complicated electronics, just reliable performance you can count on. With fewer moving parts and less to go wrong, it's simple to use, easy to maintain and built to work. Whether you are working on cars, light trucks, or bikes, it's intuitive interface, self calibration, and auto start hood make operation quick and easy. Modes for clip weights, and sticky weights you get everything you need and nothing you don't. Backed by local Canadian parts and service. All at an affordable price.

## INCLUDED



## WHO IS IT FOR?

Tire shops, mechanics and enthusiasts looking for a simple, cost effective solution to add static and dynamic balancing on a variety of vehicles.

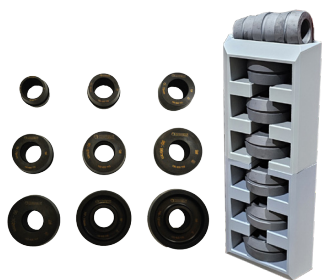
## BENEFITS

- Upgraded software makes it easy to navigate between settings and quickly set dimensions.
- Has a laser at bottom top center (the 12 o'clock) position to easily and accurately place adhesive weights.
- Foot brake makes wheel weight preparation and application easy and ergonomic for both hammer-on clip weights and stick-on tape weights.
- Auto-start hood starts the balancing process as soon as the hood is lowered.

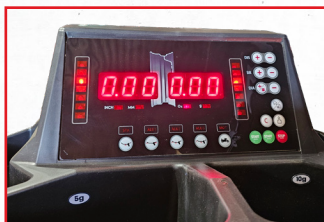
## SPECIFICATIONS

RIM DIAMETER	10" TO 24"
MAX WHEEL WEIGHT	155 LBS
MAX WHEEL DIAMETER	39"
RIM WIDTH	1.5 TO 20"
PRECISION	+/- 1G
MOTOR POWER	0.25KW
ROTATION	200RPM
BALANCING TIME	10S
SECOND TEST	<5G
ELECTRICAL	110V/1PH, 15 AMP
DIMENSIONS	1300 X 1150 X 1700MM

## OPTIONAL ACCESSORIES





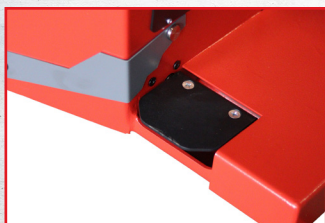


USER FRIENDLY  
CONVENTIONAL DISPLAY

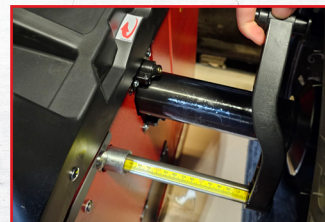


LASER GUIDED  
WEIGHT PLACEMENT  
AT TOP

WEIGHT STORAGE  
TRAY



AUTO BRAKING  
+ FOOT BRAKE



MANUAL DATA  
MEASUREMENT

